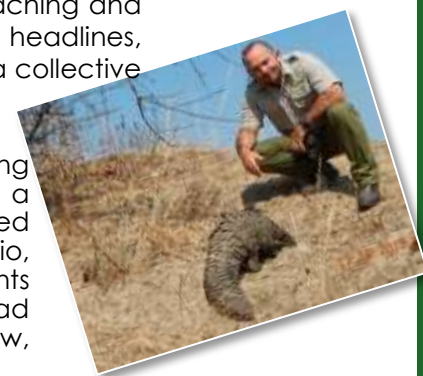


Introduction from the CEO

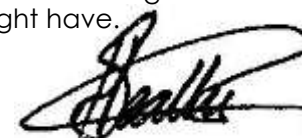
2013 saw a resurgence in international interest in conservation and the devastating effects that poaching and the illegal wildlife trade is having on wildlife populations in Africa. Whilst Zambia was not often in the headlines, we are by no means immune to the problems and challenges faced across our continent and only a collective response at local, national and international levels will start to solve the crisis we are now in.

For GRI, 2013 was a year of expansion. Our support to ZAWA and their efforts to combat poaching increased significantly with the deployment of the Special Anti-Poaching Unit (SAPU) who recorded a number of notable successes in their first year of operations. Our Muzovu Awareness Project reached more pupils and teachers than ever before and we have added a research project to our portfolio, welcoming Dr. Kerryn Carter and her husband John to the GRI family. Our herd of orphaned elephants grew by just one this year with the addition of Nkala in June. He was rescued by villagers who had heard about the Elephant Orphanage Project via our Community Outreach Project's radio show, testament to the power and importance of engaging the people that live around our national parks.



None of this could have been achieved without the fantastic support that we receive from all over the world. We are humbled by the generosity and trust of all our funders large and small and we will continue to strive to ensure that every Ngwee, Cent or Pence is used as efficiently as possible. On behalf of all the team at GRI, thank you for your support and for taking the time to read this Review. I hope you find it interesting and encouraging and we welcome any feedback you might have.

Sport Beattie
Chief Executive Officer
 Game Rangers International



About us



Game Rangers International was founded in 2008 to assist the communities living around **Kafue National Park** to better manage the natural resources of the area through support to wildlife management & protection, community outreach and education. Our five conservation projects help protect individuals and communities of both wildlife and people in **Zambia**.



Focus on Zambia

At the heart of central Africa, Zambia is being significantly affected by the rising levels of poaching experienced over recent years on the continent.

Nearly a third of Zambia's land mass is allocated as a protected area and every year hundreds of thousands of tourists come to visit the fantastic natural features of the country, including the famous Victoria Falls.

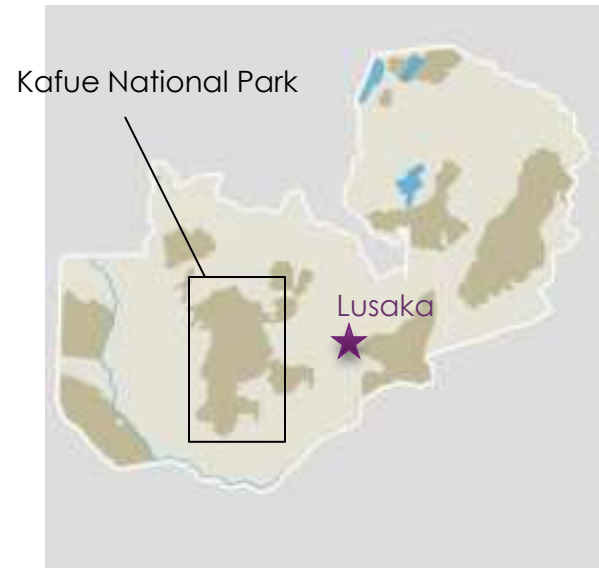
Game Rangers International works closely with the Zambia Wildlife Authority (ZAWA) to protect this precious biodiversity which includes the endangered African Wild Dog, threatened African Elephant, Lion, Cheetah, Hippo and a astonishing range of birdlife, insects and flora.



Kafue National Park

- The largest National Park in Zambia and second largest in Africa covering 22,400km²;
- Home to over 158 species of mammals and 500 species of birds;
- Despite its size and prominent location close to Lusaka it remains little known, largely unexplored and therefore vulnerable to poaching;
- There are many challenges to protecting and managing the wildlife in this vast region the same size as Wales (or Massachusetts)!

Zambia's Protected Areas





Kafue Conservation Project (KCP)

Providing welfare, training and operational support to wildlife personnel on the front line of endangered species protection

KCP is GRI's wildlife protection project working directly with ZAWA to support anti-poaching work in Kafue National Park and Lusaka.

Highlights for 2013:

- Establishment and support to the **ZAWA Special Anti-Poaching Unit (SAPU)** based at new operations camp: 22 trained anti-poaching officers divided into 3 teams.
- Wildlife Crime Scene Management Training (October) delivered by ZAWA Trainers and GRI Technical Advisers.
- Support to ZAWA Investigations and Intelligence Unit.
- Ongoing support to ZAWA wildlife law enforcement teams in Lake Itzhi-Tezhi and Kafue National Park.

- Attendance of Interpol conference, Nairobi.

2013 SAPU Arrests and confiscations

- 49 suspect poachers
- 19 weapons
- 14 ivory tusks
- Over 3000kg bush meat seized
- 325 wire snares recovered



Elephant Orphanage Project (EOP)

Rescuing, rehabilitating and releasing orphaned elephants back into the wild

The EOP is Zambia's only elephant orphanage providing a refuge for calves abandoned mostly as a result of poaching and human elephant conflict.

- Now caring for **13** orphaned elephants between the **Lilayi Elephant Nursery** in Lusaka (6) and the **Kafue Release Facility** (7).
- New rescue, **Nkala** reported at 3 months old in June by local communities. Listeners to the GRI Community Outreach Project Radio Program contacted the EOP to rescue him after he was abandoned as a result of human elephant conflict. He is now stable and a well integrated member of the Lilayi herd.
- Rescued in 2012, **Suni** remains a concern. Paralysed in the right back leg as a result of an axe attack, she was unable to walk. In 2013 she has benefitted from an ergonomically designed brace to support her leg enabling her to walk. In June acupuncture treatment was commenced with the goal of stimulating nerve regeneration.
- **Lilayi Elephant Nursery** is open every day to visitors from Zambia and all over the world. In 2013 we welcomed over 5100 people!



Height in Meters
Elephant Orphanage Project
Nov-2013

Muzovu Awareness Project (MAP)

Inspiring greater environmental awareness through education in Chongololo Conservation Clubs in Zambian primary schools

MAP helps schools set up and operate conservation clubs through which the seeds of environmental awareness are sown. Lessons are taught by Project Officers, Bruce Munkombwe, Kelvin Chanda and, joining us in 2014, Peter Kilalo.

Highlights for 2013:

- **9450** local pupils involved in conservation education through Chongololo Clubs.
- **20** local primary schools involved in Kafue NP area and **5** new local schools involved in Lusaka;
- Three rounds of lessons in each school:
 - Water is life!;*
 - Jobs in conservation; and*
 - Renewable Energy.*
- **Annual Global Canvas Art Competition:** over 700 entries. Tumelo Muyangwa and Elizabeth Ramsey from Zambia were joint overall runners up in the 14-16 age category. Their artwork was displayed in the UK.
- 5 Zambian primary schools partnered with 5 British schools through the **Muzovu School Friendship Scheme.**

GAME RANGERS
INTERNATIONAL



Community Outreach Project (COP)

Promoting and supporting the sustainable utilisation of natural resources within communities living contiguous to protected areas

Working in the areas surrounding our Release Facility, COP reaches out to local communities to raise conservation awareness, discuss environmental issues and support vulnerable members of society.

Highlights in 2013:

- January: Project Manager, Britius Munkombwe commenced “**Conservation Conversations**” a weekly radio show broadcast by Radio Itezhi Tezhi FM reaching over 20,000 people in the local community region alerting people to environmental issues. A monthly phone-in session allows concerns to be voiced and addressed.
- **Lake Itezhi-Tezhi clean up** brought together ZAWA, Fisheries Department, GRI Community Outreach Project, GRI Muzovu Awareness Project, GRI Kafue Research Project and many local community members. A large amount of old fishing nets and rubbish was cleared from the main shoreline and islands which was trapping birds and wildlife.
- The **Cattle-Dipping Program** continued in the communities, helping cattle farmers protect their livestock from parasites associated with the proximity to wildlife.



Kafue Research Project (KRP)

Working to better understand and mitigate Human Elephant Conflict in the Kafue NP area and promoting scientific understanding of wild elephant herds.

Our most recently established project, KRP will help us understand the area in which we are working and our resulting impacts. Furthermore providing a platform for researchers to study the flora and fauna of Kafue NP to better understand and protect its biodiversity.

Highlights for 2013:

- Dr Kerryn Carter joined Game Rangers International as **Project Manager** in April.
- Research programs about **Human Elephant Conflict (HEC)** and wild elephant movement have been established.
- Wild elephant population study has been established collecting data on local herds.
- Practical solutions to HEC are being piloted including a **flashing LED light fence** (pioneered in Kenya) to protect crops in the local communities.
- Gathering data on keystone species such as lions.
- Working in close collaboration with the **ZAWA ecologist** in the region.



Volunteer Program

In 2013, **22** individuals joined Game Rangers International as short term Project Assistants. They brought skills and expertise to many areas of the various projects as well as financial support.

Thanks to all of our volunteers for their contribution as well as keeping in touch. Find out more about our volunteer program for 2014 by visiting our website.



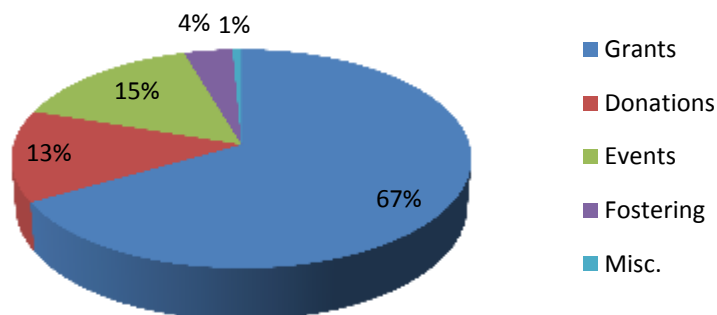
Looking to the Future

In 2014 GRI will be expanding both the technical and geographic focus of all our projects. This will include:

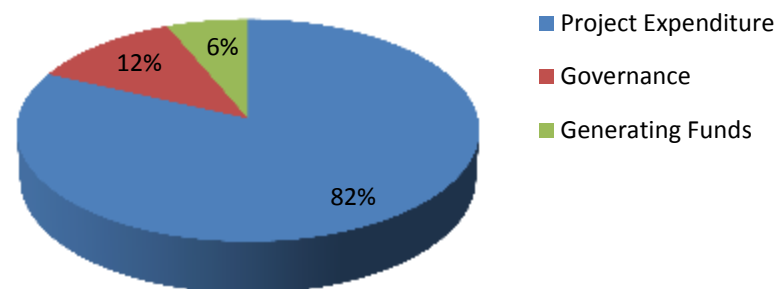
- **Expanding** our anti-poaching support to the Busanga Plains, Kasonso Busanga GMA and Nanzhila Plains
- **Working** with ZAWA to better tackle the trafficking of illegal wildlife products in Lusaka
- **Improving** the welfare of ZAWA Scouts, their families and communities
- **Initiating** conservation education programmes in new schools in Kasonso Busanga GMA and Lusaka
- **Upgrading** the Elephant Orphanage Project sites at Lilayi and in the Kafue National Park
- **Deepening** our understanding of wild Elephant behavior around our Release Facility
- **Pioneering** new ways to reduce Human Elephant Conflict around the Kafue National Park
- **Launching** the Wildlife Veterinary Project to better care for injured and snared animals

Please contact us if you would like to be a part of our work in 2014

GRI Income 2013



GRI Expenditure 2013



GRI	ZMW			%
	2013	2012	Difference	
INCOME				Difference
Grants	3,356,172.97	1,178,925.22	2,177,247.75	184.68%
Donations	682,747.65	471,663.06	211,084.59	44.75%
Events	767,607.57	703,005.50	64,602.07	9.19%
Fostering	195,184.99	10,091.70	185,093.30	1834.12%
Misc.	36,242.93	89,754.94	-53,512.01	-59.62%
TOTALS	5,037,956.11	2,453,440.42	2,584,515.70	105%
EXPENDITURE				Difference
Project Expenditure	3,670,306.93	1,402,165.91	2,268,141.03	161.76%
Governance*	527,942.34	261,117.50	266,824.84	102.19%
Generating Funds	282,395.16	225,385.85	57,009.31	25.29%
TOTALS	4,482,657.43	1,888,669.26	2,591,975.18	137 %

* Includes statutory payments for staff and all insurance policies.
Average midpoint rates for 2013: 1 USD = 5.39 ZMW, 1 GBP = 8.43 ZMW

Physical Address:

Plot 1205/1
Twikatane Road
Off Addis Ababa Road
Rhodes Park, Lusaka
Zambia

Postal address:

Post Net Box 606
Manda Hill, Lusaka, Zambia

Website:

www.gamerangersinternational.org

Trustees:

Dr. Jacob Mwanza (Chairman)
Mr. Timothy Mushibwe
Mr. Rajen Ranchhod
Mr. Robin Miller
Mrs. Jo Pope
Mrs. Efi O'Donnell
Ms. Melanie Shepherd

Chief Executive Officer:

Sport Beattie

Auditors:

BDO Zambia, Counting House
Square, Thabo Mbeki Road, PO Box
35139, Lusaka

Company Ltd by Guarantee

Registration Number: 7641

Contact:

info@gamerangersinternational.org

